



Hand Cutter

Rotating Blade | Four-Arc Blade | Straight-Knife

Introduction

- Novita rotating blade machines
 - Novita-Standard
 - Novita-Super
 - Novita-Plus
 - Novita-Jet
- Rechargeable rotating blade machine
 - MB-60
- BOM rotating blade machines
 - BOM 30
 - BOM 101 / S / Power
- KRS rotating blade and four-arc blade machine
 - KRS 550
- KSM rotating blade machine
 - KSM 200 L / R
- KVS/KV straight-knife cloth cutters
 - KVS 700
 - KVS 900
 - KV 1602 / 2002

All Machines are VDE Tested
Reproduction, inclusion in online
services as well as distribution on
data carriers is only permitted with
the permission of Kuris
Spezialmaschinen GmbH.
Errors and omissions excepted.

Innovative products in High-Tech Quality

It is difficult to imagine cutting and spreading
without handheld cutting machines.

The machine has to cater for the
operator's method of working and
not the other way round



Small Cutting Machines

Make a step towards a better cut. Fit in the cutting industry starts with accurately cut material or technical textiles. Seldom has a handheld cutting tool been so keenly tailored to the cutter. Cutting thick layers, into tight corners, at acute angles - this is precisely what the machines are designed for. The quality of the cut - that is decided by the cutter and the cutting blade. The new small cutting machines glide easily through the fabric; they produce a cleaner cut and are more manageable.

Today, rotating blade machines are used primarily for straight, long cross cuts. Thanks to the smooth, clean cut they are excellently suited to knitted goods and knitwear as well as linings and other materials that are susceptible to fraying and the buildup of fluff. There are also various applications in the manufacture of upholstered furniture and mattresses (cutting upholstery and diol fabrics etc.) in felt, cotton wool and dressing material, blanket, carpet and bodywork factories. The rotating blade gets its cutting effect in combination with the jaw with knife-edged joints fitted to the base plate. The integrated grinding device reshapes the blade. Steel blades with a higher service life can be supplied for extreme loads. The finger guard provides safety when cutting and offers protection against injuries.

The drive motors can be designed for DC and AC current. If required, rotating blade machines can be fitted with a four-arc knife and counter blade for cutting plastic material and rubber etc. The special half-speed or multiple speed motor is then recommended. The machine can then be fitted with a blade damping device to prevent the knife from becoming encrusted with cutting residues.

Straight-Knife Cloth Cutters

Sharp, quick, convenient application. Easy and reliable to operate.

Straight-knife cloth cutters with cutting heights of 70 to 210 mm are ideal tools for all cutting operations. From pattern-making through to cutting multiple layers, they are suitable for all flexible surface structures, such as textiles, knitwear and knitted goods, technical textiles and special materials, such as films, felt, Skai, branded films and soft leather etc. The machines excel in being able to keep to the curves. Thanks to its particularly narrow and low construction, the machine provides good visibility of the blade. A special coating offers excellent glide properties and considerable wear resistance.

Sliding handle, carrying handle, presser handle, ON / OFF switch and sharpening tool activation are optimally configured. The machines are carefully balanced and easy to manage. Whoever works with them feels they are an extension to themselves. The blade is sharpened on both sides as it is lifted up and down. Unusually even and exact. The layers of material are therefore always cut cleanly, free from fraying right down to the bottom layer of material.

An important feature (especially with the KVS 900) is, that it is not possible for the grinding equipment drive to be damaged when the grinding attachment comes up against an obstacle (e.g. layer of material).

Who needs these strong and flexible machines?

Ladies, gentlemen and childrens' clothing, sports and professional clothing factories, linen, knitwear and hosiery production, stocking makers, bed linen, bed and quilt makers, curtain and home décor material production and the entire home decoration sector, upholstered furniture industry, saddlers, tanneries, leather manufactures, glove manufactures, hat and bonnet production, toys and dolls' clothes manufacture.

Workshop of public authorities, hospitals, weaving mills, home textiles, tie manufactures, handcraft industry, slipcover manufacturers, dockyard and ship rigging, carpet factories, large book binders, fibre glass processing companies, woven felt factories, automotive, shoe-makers, pushchair manufacturers, manufacturers of camping articles, caravan manufacturers, fur processors, paper board factories, office furniture manufacturers and fisheries.

Several Advantages at a glance:

- Excellent handling
- Lower cutting resistance
- Lower power requirement
- Better around curves
- Higher cutting speed

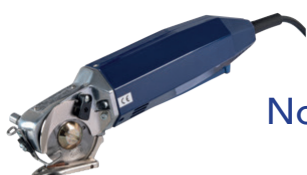
Novita Standard

There is the option of three bases,
depending on the application:

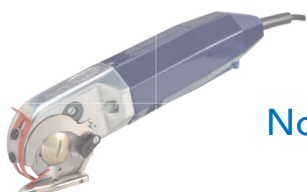
33283 – Novita Standard with flat base

33284 – Novita Standard with skid base

33289 – Novita Standard with skid base with protective ball



Novita Standard



Novita Super



Novita Plus



Novita Jet



Flat Base

For cutting all kinds of materials
in the outer wear industry

Novita Standard

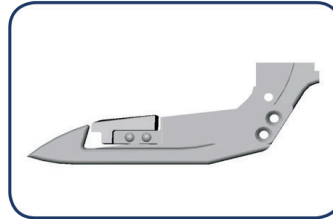
Application Area

Effortlessly clean and without considerable technical investment you are therefore able to cut all manner of textiles and soft leather. There are applications for single layer and multiple layer cutting, particularly for cutting templates and patterns. Also ideal for trimming defective parts, for cutting knitwear and knitted goods straight and curtains, upholstery and decorative fabrics true to form, even for an unconventional application. Icelandic fishermen separate the tail fins of plaice and other fish, using the Novita Standard. The lubricator decreases friction between the blade and counter blade, enabling laminated goods to be cut.

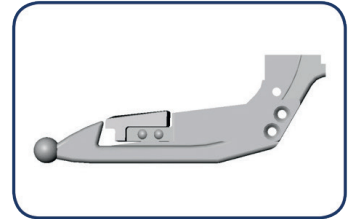
The Novita Standard is fully insulated and VDE tested. A special combination gear mechanism gives the machine a unique motor speed strength across the entire load range. The motor only gets moderately warm, preventing overload and guaranteeing the highest protection and service life. The blade guard is easily and infinitely adjustable and does not obscure blade visibility. The operating handle for the grinding device has been shaped in such a way, that the blade can be sharpened using one hand, even during the cutting operation. Handling and management of the machine is easy and balanced.

Technical Data

Motor power:	approx. 56 Watt
Motor data:	220 V / 50 Hz
Operating time:	60 % (no non-stop operating)
Motor speed (idle):	approx. 11.000 U/min
Blade speed (idle):	approx 2.600 U/min
Blade diameter:	50 mm
Blade wear limit:	approx. 42 mm
Cutting height, max.:	8 mm
Motor diameter:	approx. 50 mm
Machine length:	approx. 230 mm
Machine weight, excl. cable:	approx. 850 g
Vibration:	< 2,5 m/s
Running noise:	73 dB(A)



22508 - Skid base
For cutting thicker
materials (upholstery
etc) and for an exact
template cut



28456 - Skid base with
protective ball
For cutting delicate
materials (No fibre
damage)

Novita Super

33294 – Novita Super with flat base



Novita Standard



Novita Super



Novita Plus



Novita Jet



Flat Base
For cutting all kinds of
materials in the outer
wear industry

78825 - Extension (80cm long)
This machine is also available
with an extension.

Novita Super

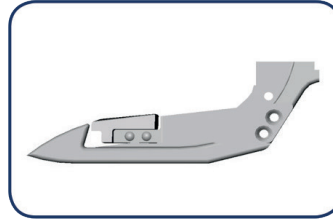
Application Area

The Novita Super provides concentrated force to withstand heavy and even the most difficult of loads. The cutting performance is 10x greater than that of the Novita Standard version. Particularly handy and lightweight machine for cutting all types of material in layers up to approx. 8 mm high, depending on the material.

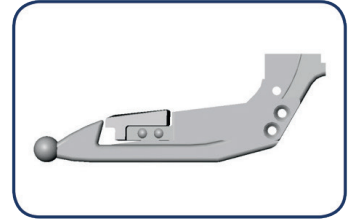
Particularly suitable for needled felt, Skai, branded films, soft leather and upholstery cover materials. The lubricator reduces friction between the blade and the counter blade, enabling laminated goods to be cut.

Cutting machine for template and pattern making, cutting single layers, re-cutting defectives parts, straight cutting true to form, light load (outer wear materials, knitted goods and knitwear, curtain, upholstery and decoration fabrics etc.).

The blade protection in signal colour can be adjusted easily and infinitely and does not constrict the visibility. The actuating lever for the grinding device is well shaped, so that the blade can be re-sharpened with one hand even during cutting. Handling and guidance of the machine is easy and balanced.



22508 - Skid base
For cutting thicker
materials (upholstery
etc) and for an exact
template cut



28456 - Skid base with
protective ball
For cutting delicate
materials (No fibre
damage)

Technical Data

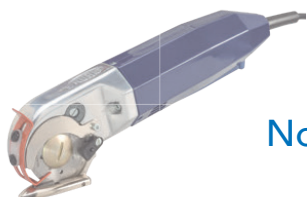
Motor power:	approx. 56 Watt
Motor data:	220 V / 50 Hz
Operating time:	60 % (no non-stop operating)
Motor speed (idle):	approx 12.500 U/min
Blade speed (idle):	approx 1.500 U/min
Blade diameter:	50 mm
Blade wear limit:	approx. 42 mm
Cutting height, max.:	8 mm
Motor diameter:	approx. 50 mm
Machine length:	approx. 260 mm
Machine weight, excl. cable:	approx. 1,000 g
Vibration:	< 2,5 m/s
Running noise:	73 dB(A)

Novita Plus

56715 – Novita Plus with flat base



Novita Standard



Novita Super



Novita Plus



Novita Jet



Flat Base
For cutting all kinds of materials
in the outer wear industry

Novita Plus

Application Area

A particularly convenient and lightweight machine for cutting all kinds of textiles for layers and up to approx. 8 mm high, depending on the type of material. Especially suitable for wool and soft materials. Either the flat base or the cutting skid may be used. The lubricator decreases friction between the blade and counter blade, enabling laminated goods to be cut.

The Novita Plus is fully insulated and VDE tested. A special combination gear mechanism gives the machine a unique motor speed strength across the entire load range. The motor only gets moderately warm, preventing overload and guaranteeing the highest protection and service life. The blade guard is easily and infinitely adjustable and does not obscure blade visibility. The operating handle for the grinding device has been shaped in such a way, that the blade can be sharpened using one hand, even during the cutting operation. Handling and management of the machine is easy and balanced.

Technical Data

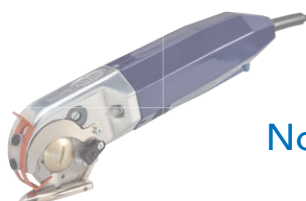
Motor power:	approx. 56 Watt
Motor data:	220 V / 50 Hz
Operating time:	60 % (no non-stop operating)
Motor speed (idle):	approx 12.400 U/min
Blade speed (idle):	approx 3.000 U/min
Blade diameter:	50 mm
Blade wear limit:	approx. 42 mm
Cutting height, max.:	8 mm
Motor diameter:	approx. 50 mm
Machine length:	approx. 230 mm
Machine weight, excl. cable:	approx. 850 g
Vibration:	< 2,5 m/s
Running noise:	73 dB(A)

Novita Jet

33278 – Novita Jet



Novita Standard



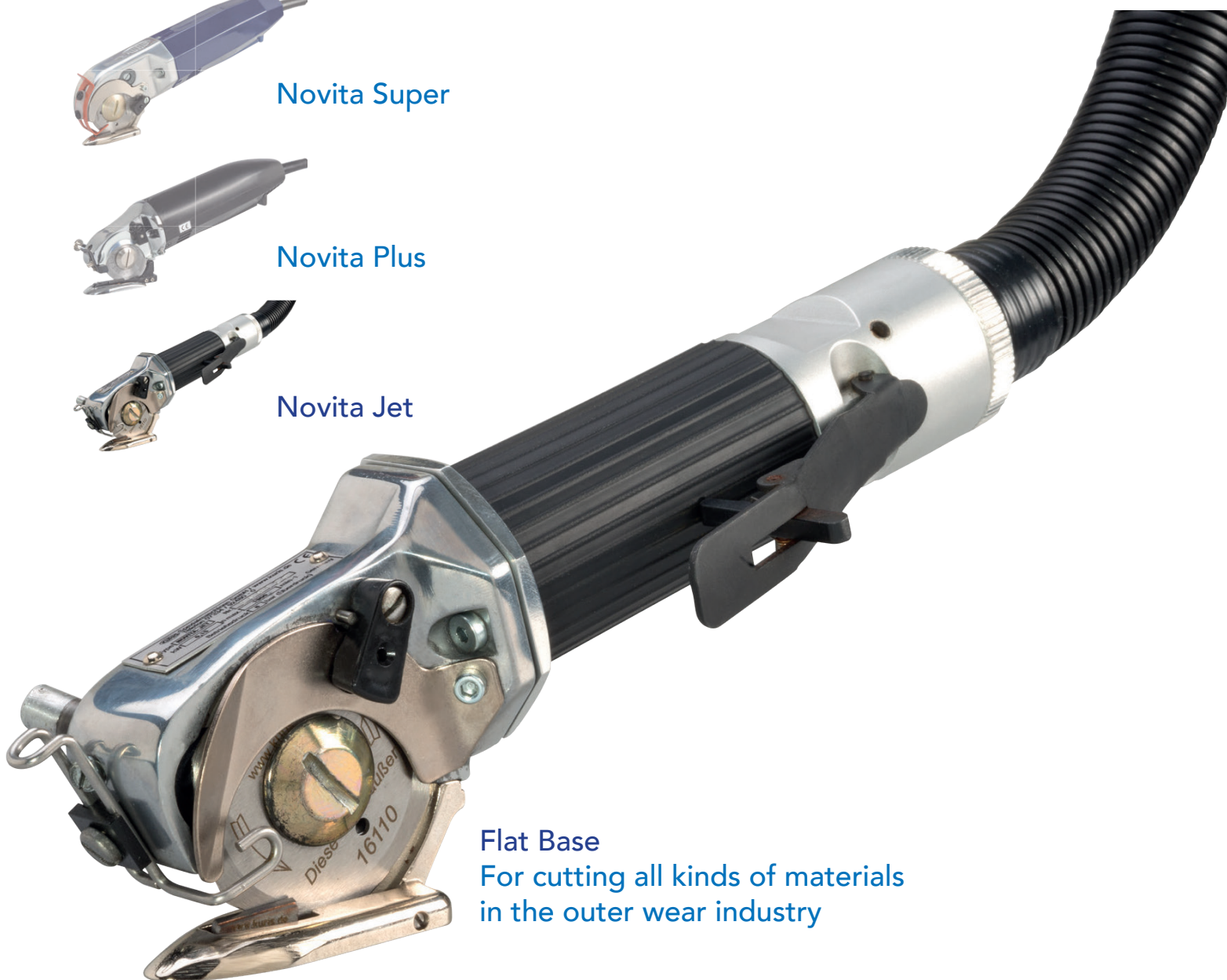
Novita Super



Novita Plus



Novita Jet

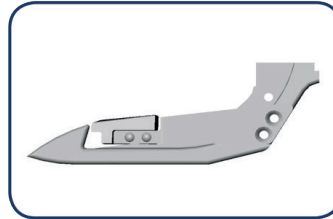


Flat Base
For cutting all kinds of materials
in the outer wear industry

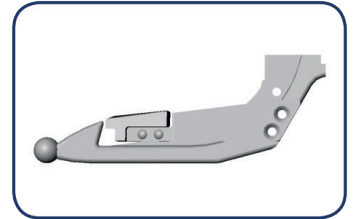
Novita Jet

Application Area

The Novita Jet is a modified version of the compressed air operated Novita Standard. It provides ease of use and increased performance everywhere where no electrical connection is possible for safety reasons, e.g. in wet areas. Untiring and reliable just like all Novita cutting machines.



22508 - Skid base
For cutting thicker
materials (upholstery
etc) and for an exact
template cut



28456 - Skid base with
protective ball
For cutting delicate
materials (No fibre
damage)

The Novita Jet is driven by compressed air. Therefore every safety risk is eliminated (overload and the electric motor burn out). The motor cannot overheat even at a constant output and capacity overload. The outlet air is evacuated to the rear through a double-walled tube inner tube for supply air; outer tube for discharged air and released into the atmosphere far away from where the cutter is working.

It therefore no longer presents a disruption to anyone, either as a result of draughts (air swirls, cold effect, circulating fluff) or even by whistling.

The lubricator reduces friction between the blade and the counter blade, enabling laminated materials to be cut.

Technical Data

Motor power:	approx. 0,15 kW
Blade speed (idle):	approx. 1.900 U/min
Operating pressure:	6 bar (max)
Tube width, clearance:	6 mm
Air consumption at nominal load:	0,25 Nm ³ /min
Cutting height, max.:	8 mm
Housing diameter:	38 mm
Machine length:	approx. 220 mm
Machine weight, excl. tube:	approx. 0,9 kg

BOM 30

33028 – BOM 30



BOM 30



BOM 101

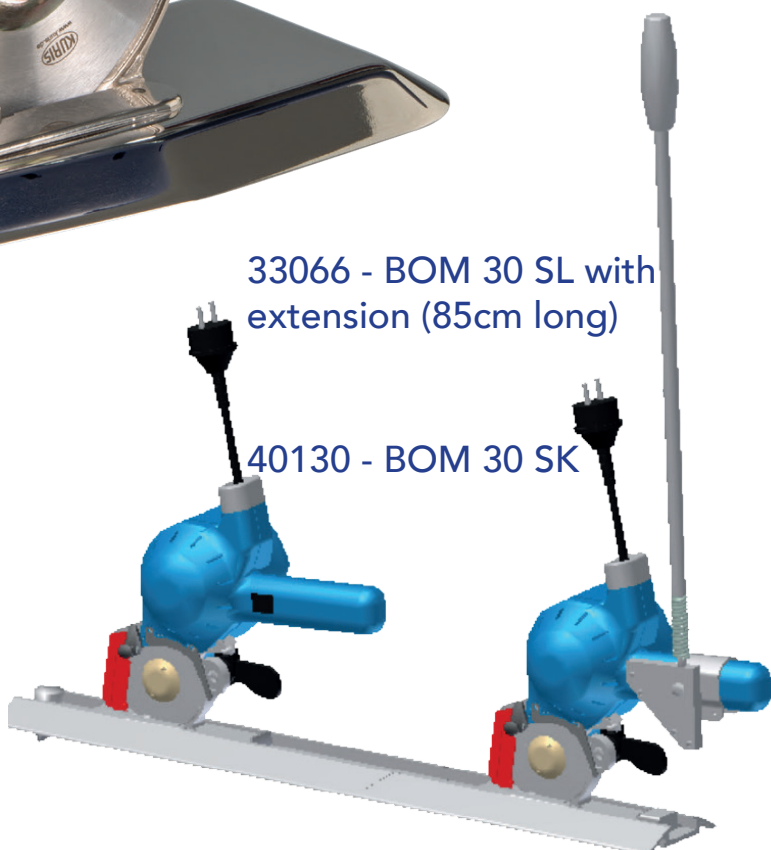


BOM 101 Akku

The BOM 30 SK and BOM 30 SL versions are supplied with a special base that is fed into an aluminium profile track. The BOM 30 SL with the extension and automatic ON/OFF switch is particularly suitable for trimming endless fabric.

33066 - BOM 30 SL with extension (85cm long)

40130 - BOM 30 SK



BOM 30

Application Area

A particularly convenient and lightweight machine for cutting all kinds of textiles for layers up to approx. 25 mm high, depending on the type of material. Especially suitable for wool and soft materials. The lubricator reduces friction between the blade and the counter blade, enabling laminated goods to be cut. For universal use for cutting single and multiple layers, light to medium load (traditional clothing materials, such as knitted goods, knitwear and decorative fabrics etc.). Also available with an extension (also with automatic ON/OFF switch) and special base for aluminium track for trimming endless fabric.

Benefits

With the BOM 30 series of electric handheld cutters, the cutting effect is produced by a six-arc blade in conjunction with a sprung-loaded adjacent counter blade. This cutting principle enables good cutting performance at relatively low blade speeds. Individual layers of the finest materials and layers of material up to a cutting height of 25 mm can be cut equally well. High traction force thanks to a robust motor with a high power margin. Optimal blade propulsion across synchronous belts and cylindrical gears with excellent operating efficiency. Practically maintenance-free thanks to a special seal. Highest performance and service life due to very low heat generation in the motor and gears.

Sturdy reliability thanks to the sprung-loaded counter blade. With carbide counter blade and HSS blade for heavy materials on request. Every machine possesses an adjustable finger guard based on employers' liability insurance regulations. Not susceptible to contaminants, threads and fluff thanks to the special development and construction of the support and gear mechanism housing.

Technical Data

BOM 30 / BOM 30 input

Motor power:	approx. 140 Watt
Motor data:	230 V / 50 Hz
Motor speed (idle):	approx. 8.000 U/min
Blade speed (idle):	approx. 1.000 U/min
Blade diameter:	80 mm
Blade wear limit:	approx. 72 mm
Cutting height, max.:	approx. 25 mm
Vibration:	< 2,5 m/s
Running noise:	73 dB(A)
Machine weight, excl. cable:	approx. 2,2 kg

BOM 101

54586 – BOM 101

49095 - BOM 101 Power



BOM 30



BOM 101



BOM 101 Akku



Extension = 85cm

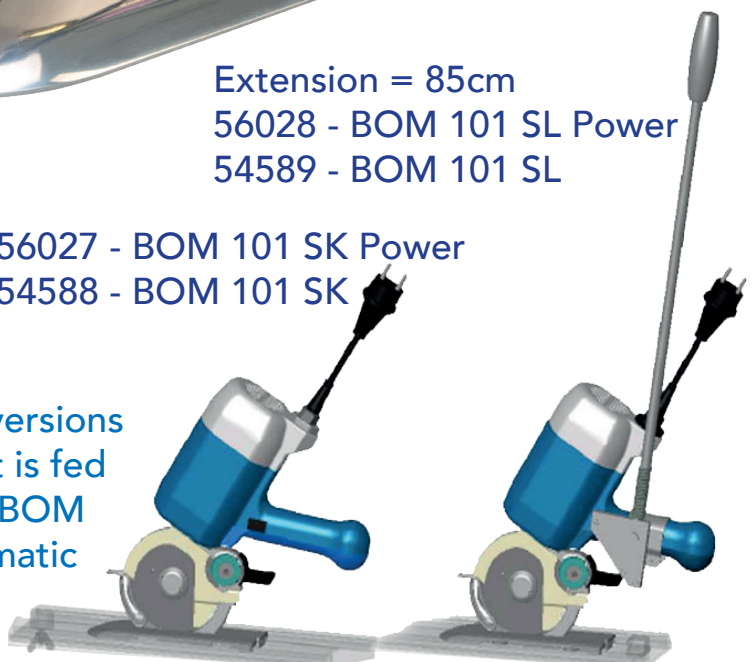
56028 - BOM 101 SL Power

54589 - BOM 101 SL

56027 - BOM 101 SK Power

54588 - BOM 101 SK

The BOM 101 SK and BOM 101 SL versions are supplied with a special base that is fed into an aluminium profile track. The BOM 101 SL with the extension and automatic ON/OFF switch is particularly suitable for trimming endless fabric.



BOM 101

Application Area

A particularly convenient and lightweight machine for cutting all kinds of textiles for layers up to approx. 25 mm high, depending on the type of material. The fortified „Power“ versions particularly suitable for jeans, leather and rigid fabrics as well as industrial fabrics. The lubricator reduces friction between the blade and the counter blade, enabling laminated goods to be cut.

Benefits

With the BOM 101 series of electric handheld cutters, the cutting effect is produced by a four-arc or six-arc blade in conjunction with a sprung-loaded adjacent counter blade. This cutting principle enables good cutting performance at relatively low blade speeds. Individual layers of the finest materials and layers of material up to a cutting height of 27 mm can be cut equally well. High traction force thanks to a robust motor with a high power margin. Optimal gear mechanism made from a special alloy with excellent operating efficiency and simple maintenance. Practically maintenance-free thanks to a special seal. Highest performance and service life due to very low heat generation in the motor and gears. Not susceptible to contaminants, threads and fluff thanks to the special development and construction of the support and gear mechanism housing.

Easy to operate, Light handling and handy machine controls in all cutting positions thanks to the „bone grip“. Grinding device very easy to operate thanks to the ideal configuration of the operating element. Optimal view of the workpiece thanks to the oval shape of the housing. Very low running noise. Quick blade change thanks to easy and very accessible blade fixing.

Technical Data

BOM 101 input

Motor power:	approx. 140 Watt
Motor data:	230 V / 50 Hz
Motor speed (idle):	approx. 8.000 U/min
Blade speed (idle):	approx. 1.000 U/min
Blade diameter:	80 mm
Blade wear limit:	approx. 72 mm
Cutting height, max.:	approx. 27 mm
Vibration:	< 2,5 m/s
Running noise:	73 dB(A)
Machine weight, excl. cable:	approx. 2,2 kg

BOM 101 Akku

69409 – BOM 101 Akku 2 AH

80700 - BOM 101 Akku 2 AH SL (Guided in a profile track, extension)

74839 - BOM 101 Akku 3 AH



BOM 30



BOM 101



BOM 101 Akku

Each machine complete with
1 charging unit and 1 battery

69026 – Battery 2 AH (Spare)
Charge time 1,5 h, 664 g)

67225 - Battery 3 AH (Spare)
(Charge time 1,75 h, 722 g)

69093 - Charging Unit



BOM 101 Akku

Application Area

A particularly convenient and lightweight machine for cutting all kinds of textiles for layers up to approx. 27 mm high, depending on the type of material. The lubricator reduces friction between the blade and the counter blade, enabling laminated goods to be cut.

Benefits

With the BOM 101 series of electric handheld cutters, the cutting effect is produced by a four-arc or six-arc blade in conjunction with a sprung-loaded adjacent counter blade. This cutting principle enables good cutting performance at relatively low blade speeds. Individual layers of the finest materials and layers of material up to a cutting height of 27 mm can be cut equally well. High traction force thanks to a robust motor with a high power margin. Optimal gear mechanism made from a special alloy with excellent operating efficiency and simple maintenance. Practically maintenance-free thanks to a special seal. Highest performance and service life due to very low heat generation in the motor and gears.

Not susceptible to contaminants, threads and fluff thanks to the special development and construction of the support and gear mechanism housing. Easy to operate, Light handling and handy machine controls in all cutting positions thanks to the „bone grip“. Grinding device very easy to operate thanks to the ideal configuration of the operating element. Optimal view of the workpiece thanks to the oval shape of the housing. Very low running noise. Quick blade change thanks to easy and very accessible blade fixing. The advantage of BOM 101 Akku in relation to BOM 101 series is the independence through the battery.

Technical Data

BOM 101 Akku Input

Motor power:	approx. 140 Watt
Motor data:	12 V
Motor speed (idle):	approx. 11.000 U/min
Blade speed (idle):	approx. 900 U/min
Blade diameter:	80 mm
Blade wear limit:	approx. 72 mm
Cutting height, max.:	approx. 27 mm
Vibration:	< 2,5 m/s
Running noise:	73 dB(A)
Machine weight, excl. cable:	1,75 kg without battery / gross 5,0 kg

KRS 550

33425 – KRS 550 R (Rotating blade)

33453 - KRS 550 V (Four-arc blade)

80646 - KRS 550 R for guide rail (BOM 101 profile track)

75786 - KRS 550 V for guide rail (BOM 101 profile track)



KRS 550 R

KRS 550

Application Area

The KRS 550 model of the Kuris cutting machines can be supplied as a rotating blade or a four-arc machine with counter blade. It is possible to convert a rotating blade machine to a four-arc blade machine or vice versa using an appropriate unit.

KRS 550 with rotating blade:

1. For cutting all kinds and designs of textile materials.
2. Particularly suitable for cutting knitwear and knitted goods and quilted materials that tend to fray easily or produce fluff.

KRS 550 with four-arc blade and counter blade, for cutting

1. synthetic material that tend to be over a certain height for bonding cut edges.
2. plastic materials (Skai, branded films, etc.).
3. laminated flooring.
4. synthetic rubber interwoven materials (also rubber or soft rubber up to a certain height).

The KRS 550 can be fitted with a blade damping device to prevent the blade from becoming encrusted with cutting residues. A teflon-coated blade is recommended for cutting particularly critical material.

	AC 400 V, 50 Hz	Change-pole 400 V, 50 Hz	
Motor power in watts	370	200	280
Motor speed in rpm	2800	1400	2800
Blade speed in rpm	1140	570	1140

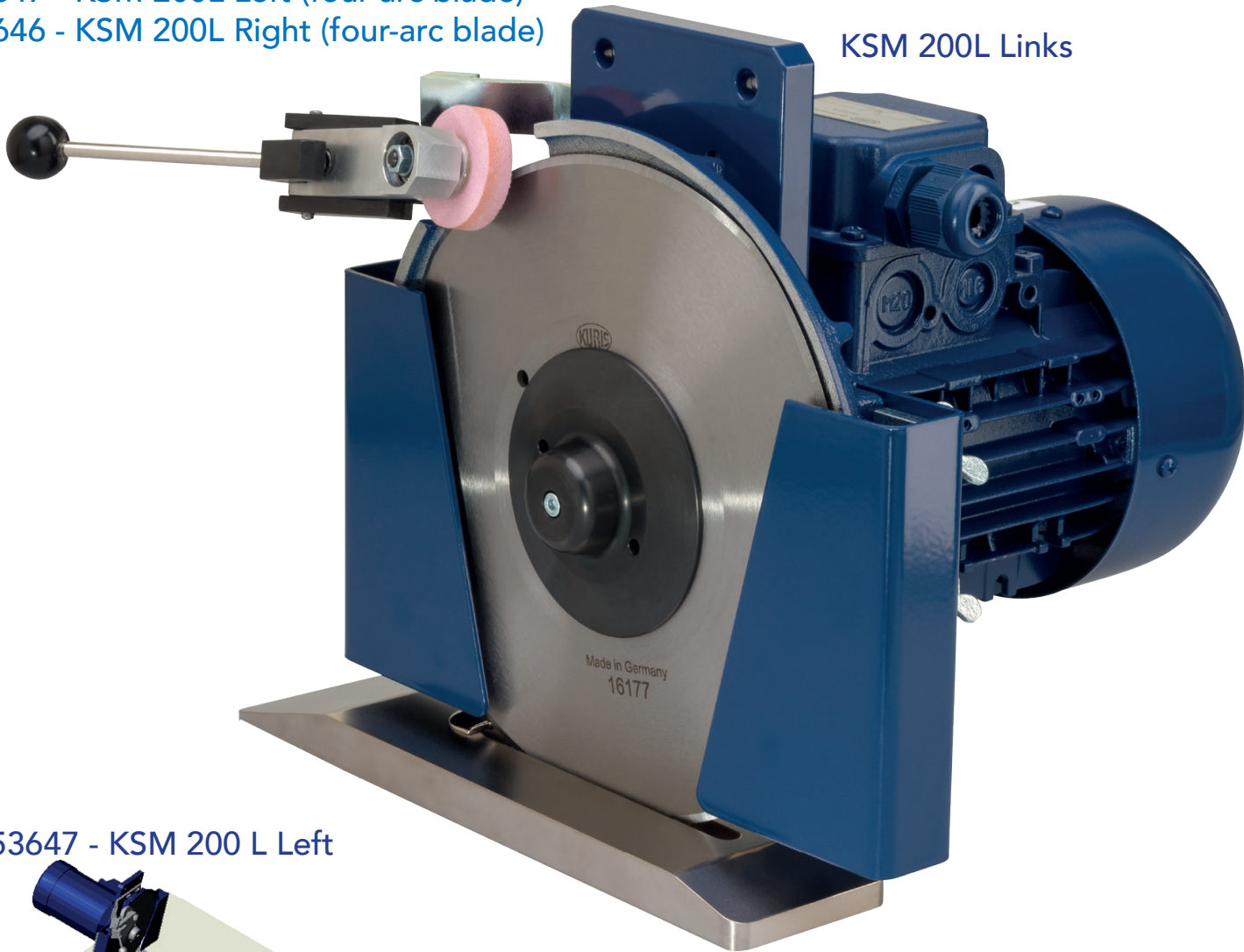
Technical Data

Cutting height, max:	55 mm
Blade diameter:	120 mm
Blade wear limit:	approx. 93 mm
Running noise:	<70 dB(A)
Machine weight:	10,5 kg

KSM 200 Q L/R

- 33326 – KSM 200 Right (rotating blade)
- 33327 – KSM 200 Left (rotating blade)
- 53648 – KSM 200L Cross Cutter (four-arc blade)
- 53647 - KSM 200L Left (four-arc blade)
- 53646 - KSM 200L Right (four-arc blade)

KSM 200L Links



53647 - KSM 200 L Left

53648 - KSM 200 L Q

33327 - KSM 200 Left

53646 - KSM 200 L Right

33326 - KSM 200 Right



KRS 200L Q L/R

Application Area

Edge and middle cutters for special applications, individual customer solutions or special machine construction.

KSM 200 in left-hand and right-hand design

The KSM 200 machines have a rotating blade made from tool steel, a grinding device with two sharpening edges and no base plate. We recommend the rotating blade in HSS quality for certain types of cut.

You can distinguish between left and right by looking at the machine from the side of the blade. If the grinding device is located on the left, this is a left-hand version. If the grinding device is located right, this is a right-hand version.

KSM 200 L in left-hand and right-hand version.

The "L" stands for lengthways cutter. Even this machine is constructed in a left- and right-hand version, i.e. for use as a pair for trimming endless fabric etc. The KSM 200 L possesses an HSS quality four-arc blade, a co-ordinated unilateral grinding device and a base plate with counter blade, i.e. it can only cut in one direction.

KSM 200L Q

The "Q" stands for cross cutter. This machine also has an HSS quality four-arc blade, unilateral grinding device and, in contrast to the KSM 200 L model, a base plate with two counter blades, enabling the KSM 200 Q model to cut in both directions.

	Standard Version	1. Option (On Request)
Motor Data	0.37kW 230/400V 2,2/1, 27A 50Hz	0,30kW 230/400V 1,61/0,92A 50 (60) Hz
Speed	1350 1/min	2800 1/min (3335 1min)

Technical Data

Motor power:	0,37 kW
Cutting height, max:	22 mm with protection 40 mm without protection
Blade diameter:	200 mm
Weight:	9,5 kg

KRS 700

33530 – KRS 700 E

37694 - KRS 700 UVV



KRS 700 UVV



KVS 700

KVS 900

KVS 1602 / 2002

KVS 700

Application Area

The ideal machine for all cutting operations, from pattern making to cutting multiple layers, with maximum cutting heights of 8 to 210 mm, for flexible surface structures such as textile fabrics, knitted goods and knitwear, technical textiles and special materials such as films, felt, Skai branded films and soft leather etc.

The KVS 700 straight-knife cloth cutter bridges the former gap between electric handheld cutting machines and conventional straight-knife cloth cutters for thick layers. An electric handheld cutting machine with rotating blade will have problems cutting acute angles and tight curves at certain layer heights. In contrast, even darts, necklines and similar can be cut out using a single-knife cloth cutter.

The base plates for the Kuris straight-knife cloth cutters are provided with a special coating. This offers excellent glide properties and high wear resistance.

Benefits

The good cutting performance is the result of the high stroke rate of the blade, the tips of which only project a little way from the base plate, making it possible to achieve a clean cut for a smaller number of layers. The grinding equipment is semi-automatic, i.e. the two grinding discs are power driven and the grinding device is lifted by hand. The blade driving mechanism and guide have been optimized. All the rotation parts run on ball bearings. The machine is therefore virtually maintenance-free.

Technical Data

Motor data:	220-250 V WS 50/60 Hz
Max. cutting height:	approx. 70 mm
Motor power:	approx. 140 watts
Blade stroke:	12-15-18 mm
Weight:	6 kg

KRS 900

33866 – KRS 900 E

57695 - KRS 900 UVV



KRS 900 E



KVS 700

KVS 900



KVS 1602 / 2002

KVS 900

Application Area

The KVS 900 straight-knife cloth cutter is the machine for the job. Ideally suited to cutting every type and design of textile material, though particularly for cutting thick layers, tight curves and acute angles.

Straight-knife cloth cutter for average layer heights, even for difficult to cut materials, high cutting accuracy thanks to the very small dimensions of the base plate, support and blade, fatigue-proof work with quiet running, good overview and low weight.

We play it safe when it comes to safety. Just like all models, the KVS 900 meets the relevant safety standards. Possible sources of danger are already ruled out at the design stage. Therefore the presser foot bar with only a 13 mm gap from the blade takes on an additional function as a blade guard.

An important feature (especially with the KVS 900) is that it is not possible for the grinding device drive to be damaged when the grinding device comes up against an obstacle (e.g. a layer of material).

The very high lifting speed of the grinding head at approx. 1 s per sharpening operation reduces sharpening times quite considerably, making it possible for the grinding wheel to reach an optimum of 7 rpm. The blade is sharpened on both sides as it is lifted up and down. Unusually even and exact. The layers of material are therefore always cleanly cut, free from fraying right down to the bottom layer of material.

Application Area

- Exact, sharp cut thanks to the automatic grinding device with whetstones
- Sturdy special motor with a high power margin
- Narrow supports reduce effort
- Low base plate with a special surface minimizes slide resistance

Technical Data

Motor power:	0,37 kW
Max. cutting height.:	approx. 90 mm
Motor speed (idle):	2.800 rpm
Blade stroke:	36 mm
Vibration:	2,5 m/s
Weight:	approx. 8,4 kg
Running noise:	70 dB(A)

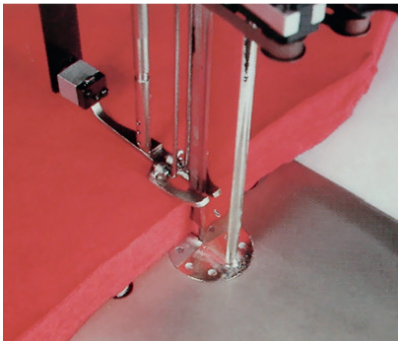
KRS 1602 / 2002 E/UVV

33865 – KV 1602 E

33866 - KV 1602 UVV

57695 - KV 2002 E

57696 - KV 2002 UVV



Multi-layer cutting



Grinding device with
sanding belts



KV 1602 E



KVS 700

KVS 900



KVS 1602 / 2002

KRS 1602 / 2002 E/UVV

Application Area

The straight-knife cloth cutter is suitable for cutting every type and design of textile materials, though especially for cutting thick layers, tight curves and acute angles, right up to the heaviest loads of all kinds of clothing materials and practically every industrial fabric etc.

Benefits

The machine has an automatic grinding device and is largely maintenance-free. The machine is easy to move.

- Exact, sharp cut thanks to the automatic grinding device with sanding belts
- Sturdy special motors with a high power margin
- Narrow support for reducing effort
- Low base plate with a special surface for minimizing slide resistance
- Machine and blade guard equipment to CE and accident prevention regulations
- Made in Germany

Model	Cutting cm	Motor Power in watts at rpm A.C	Blade mm	weight kg
KV 1602	16	550-2800	38	14,5
KV 2002	20	550-2800	38	14,5

Technical Data

Motor power:	0,75 kW
Max. cutting height:	1602 = 160 mm 2002 = 200 mm
Motor speed (idle):	2.800 U/min
Blade stroke:	40 mm
weight:	15 kg

Specialist For Innovative Spreading And Cutting Technology

The many years of experience and the innovative thinking enable fast and professional customer support you will not forget and a perfect worldwide service. We offer the optimal product range for complete cutting from a single source. You will be impressed by the quality of our products. We will be happy to advise you.

Product Program

Fully automatic cutting technology, CAD software solutions, Rotation blade machines, Straight-knife cloth cutters, Automatic servo cutters, Rotation hoop knife machines, Manual, semi-automatic and fully automatic spreading machines, Cutting and spreading tables, Conveyor belts, Special machines

Spare Parts

We offer a wide range of spare parts for all cutting machines. We aim to provide fast and efficient service to make the process smooth and quickly as possible.



Application Area of our machines

Apparel

-

Automotive

-

Technical Textile

-

Upholstery

-

Aerospace

-

Shipbuilding

-

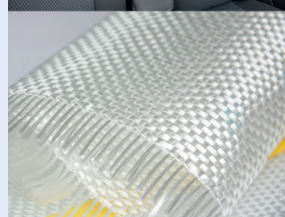
Railway

-

Building Sector

-

Renwable Energy (Wind, Energy, Solar)





Design, Manufacture, Supply & Support

enquiries@i2europe.co.uk

For further information and even more machinery visit our website

www.i2europe.co.uk